

As of 2026/04/30

Suitable Investor

Suitable for investors who have a high volatility investment profile.

Investment Strategy

This investment strategy includes a diversification of asset classes, managed by some of the most talented fund managers. The strategy aims to outperform SA inflation by 6% p.a. (6% real return) net of fund management fees over a rolling 7 year period. The strategy aims to provide investors with capital growth over the long term within acceptable risk parameters. The strategy invests in asset allocation, target return, equity and international unit trust funds. The strategy is expressly flexible to accommodate all approved asset classes. It will actively rotate international and local assets.

Suitable Products

Suitable products would include Endowments and Discretionary investment vehicles.

Risk Profile



Model Portfolio Details

Lead Manager	IFSA (Pty) Ltd
Sub-Investment Manager	MitonOptimal
Inception Date	2008/10/01
Reg 28 Compliant	No
Benchmark	(ASISA) Wwide MA Flexible
Return Objective	RSA CPI +6%
Annual Mandate Fee (%)	0,60
Model TER (%)	1,16

Monthly Market & Portfolio Commentary

April delivered a powerful and broad-based recovery across global markets, unwinding a significant portion of the losses sustained in March. The S&P 500 returned +10.47% in USD and the Nasdaq 100 surged +15.65% in USD, as investor sentiment shifted sharply in the absence of further Middle East escalation. The MSCI World returned +9.59% in USD, while the MSCI ACWI returned +10.17% in USD. Emerging markets were the standout regional performer for the month, with the MSCI Emerging Markets Index gaining +14.71% in USD, reflecting a combination of a weaker US Dollar, improving risk appetite and continued broadening of global market leadership. Global listed property, as measured by the S&P Global REIT Index, returned +8.81% in USD. The FTSE 100 returned +5.40% in USD terms and the JPX-Nikkei Index 400 gained +8.81% in USD, while the Hang Seng returned a more modest +4.14% in USD.

The investment team characterised April's rally as a market that had been "over-hedged for chaos" and was therefore under positioned for a right-tail recovery. The central question posed during the month — whether markets were displaying ignorance or wisdom in the face of ongoing Middle East conflict, sticky inflation and uncertain earnings — remained unresolved. The sharp rebound suggested that positioning dynamics and relief from the absence of further geopolitical escalation were the primary drivers, rather than a fundamental improvement in the macro backdrop.

South African markets participated in April's global recovery, though with considerably less momentum than offshore peers. The FTSE/JSE All Share Index returned +1.65% in ZAR for the month, bringing the year-to-date return to +1.02% in ZAR. SA Listed Property was the strongest local performer, gaining +5.40% in ZAR, benefiting from the pullback in bond yields and improved sentiment toward yield-sensitive assets. The FTSE/JSE All Bond Index returned +3.27% in ZAR, while cash, as measured by the STeFI Composite, returned +0.54%.

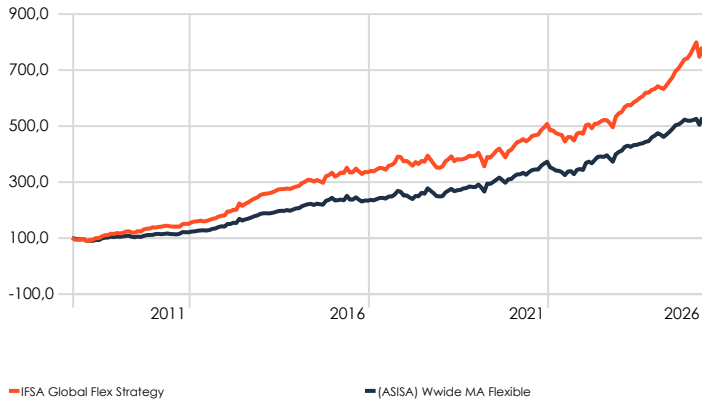
The Rand strengthened modestly during the month, with the USD/ZAR rate moving from 16.94 to 16.67, a 1.60% appreciation. This provided some cushion for domestic assets and reflected the broader weakness in the US Dollar during the risk-on recovery.

The domestic macro backdrop became more challenging during April. Local headline CPI rose to 3.1% year-on-year in March, capturing only part of the oil shock, with economists expecting April CPI to approach 4% as fuel price increases feed through. Fuel prices jumped approximately 25–30% in early April, with a temporary R3 per litre cut in the general fuel levy partially cushioning the blow for April and May.

The investment team maintained a deliberately balanced and cautious approach to portfolio construction throughout April. The team's ongoing scepticism about whether the April rally represented genuine macro improvement or a positioning reversal informed its decision to hold discipline rather than add risk aggressively. With inflation remaining elevated across major economies, central banks divided on the path of interest rates, and oil prices continuing to rise, the balance of risks was not seen as sufficiently clear to justify a material increase in equity exposure. Diversification across regions, asset classes and return drivers remained the investment team's primary risk management tool.

As of 2026/04/30

Investment Growth (Since Inception)



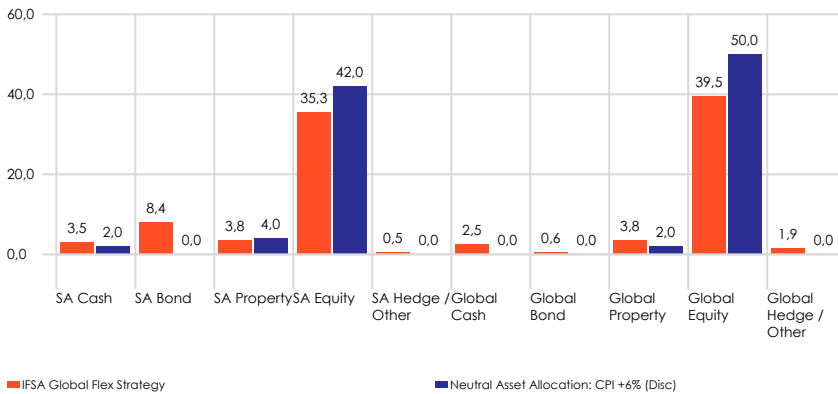
Discrete Calendar Performance (%)

	2022	2023	2024	2025	YTD
IFSA Global Flex Strategy	-6,94	15,44	16,02	19,89	3,33
(ASISA) Wwide MA Flexible	-7,98	18,87	14,31	11,47	2,26

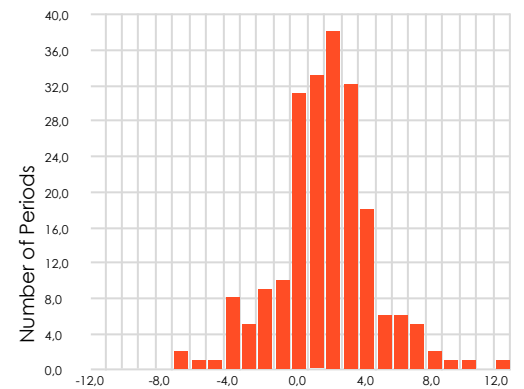
Annualised Performance (%)

	1 Year	3 Years	5 Years	Since Inception
IFSA Global Flex Strategy	21,32	15,57	11,58	12,96
(ASISA) Wwide MA Flexible	12,96	11,93	9,80	10,24

Asset Allocation [Portfolio vs Neutral] (%)



Monthly Return Distribution



Model Portfolio Composition (%)

	Weight	Mgmt Fee	TER
MitonOptimal BCI Worldwide Active Beta B	25,00	0,40	1,06
Satrix MSCI World Index B2	11,00	0,12	0,35
36ONE BCI Equity A	10,00	1,15	1,21
Allan Gray Equity C	10,00	0,98	1,79
Satrix Smartcore Index A1	10,00	0,69	0,69
Centaur BCI Flexible A	9,00	1,44	1,81
Old Mutual Global Equity B1	8,00	1,55	1,59
Mi-Plan BCI Global Macro Fund B5	5,00	0,98	1,20
Ninety One Global Franchise FF H	5,00	1,27	1,34
Sesfikile BCI Property A	4,00	1,27	1,30
Sesfikile BCI Global Property B	3,00	0,63	0,64

About IFSA

IFSA is a South African-based asset management investment firm that creates bespoke solutions for investors and independent financial advisors (IFAs).

IFSA (Pty) Ltd is an Authorised Category II Financial Service Provider Registration No. 2000/005153/07 FSP 43337.

Data provided by Morningstar. IFSA (Pty) Ltd will not be liable for any special, indirect, incidental, consequential or punitive damages or any damages whatsoever, whether in an action of contract, statute, delict (including, without limitation, negligence) or otherwise of any kind whatsoever suffered or incurred by any person who accesses or uses this Fund Fact Sheet, including but not limited to any injury, loss or damage suffered as a result of:
 - errors or discrepancies in the information provided;
 - any unauthorised access to this Fund Fact Sheet by third parties;
 All information contained in this Fund Fact Sheet about products, services and their terms and conditions are subject to change without notice. The Model TER (%) of the value of the financial product was incurred as expenses relating to the administration of the financial product. A higher TER does not necessarily imply a poor return, nor does a low TER imply a good return. The current TER may not necessarily be an accurate indication of future TERs. It should not be considered in isolation as returns may be impacted by many factors over time including market returns, the type of financial product, the investment decisions of the investment manager and the TER. All Fees are expressed excluding VAT. A model portfolio may invest in Collective Investment Schemes and other financial instruments where available on the administrative platforms. Collective investments are generally medium to long term investments. The value of participating interests may go down as well as up and past performance is not necessarily a guide to the future. The model portfolio may contain IP-Marco funds, which levy their own charges and may be managed by the Fund Management Company, MiltonOptimal, for services rendered. An approved FSP distribution partner may be compensated for their contribution to the investment committee meetings. Performance figures are sourced by the data providers' systems for lump sum investments including income distribution, at Net Asset Value (NAV) to NAV basis. The performance figures do not include annual LSP Administration fees, DIM or the Advisor fees. A Fund of Funds collective investment may invest in other collective investments, which levy their own charges. Collective investment prices are calculated on a NAV basis and auditor's fees, bank charges, trustee and RSC levies are levied against the portfolio. Tel: +27 (0)11 394 0260 Email: frikkie@ifsaprivatteequity.com Website: www.ifsaprivatteequity.com Postal address: Suite 424, Private Bag X043, Benoni, 1619 Contact name: Frikkie Van Loggerenberg Physical address: Boardwalk, Phase 7, Office Block 14, 107 Haymeadow Street, Fearie Glen, Pretoria, 0043